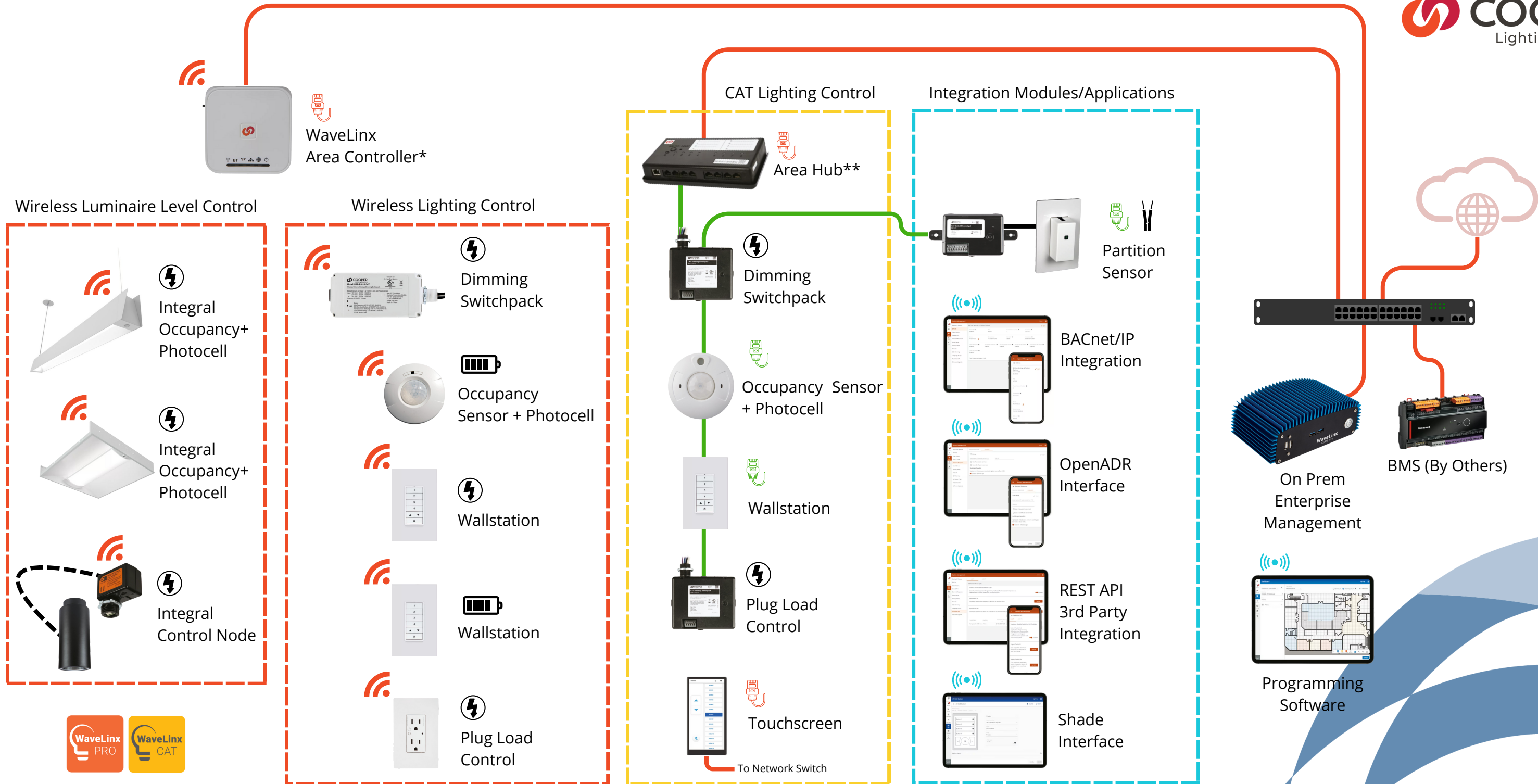


WaveLinx System Architecture



Key

- WaveLinx CAT (CAT5)
- Ethernet (IEEE 802.3)
- 📶 WaveLinx Pro (IEEE 802.15.4)
- 📶 WiFi (IEEE 802.11)

Power Legend

- 🔌 Powered by WaveLinx CAT
- 🔌 PoE
- ⚡ Line Voltage
- 🔋 Battery
- 🔌 Low Voltage

Notes

- *150 Wireless or CAT devices per WAC
- *MAX distance from WAC to PoE switch is 300'
- **MAX CAT cable length is 1000'
- **Device is PoE powered. No external power supply
- **Each Area Hub can manage up to 8 rooms/areas

For More Information Contact the SCI Connected Solutions Group:
LCG@scilight.com
<https://www.scilight.com/controls>